

Wellis®

spa • swim spa • sauna • 2020

wellis.com

"Imagine coming home after a tiring day or week.
Just walking to the bathroom or the garden to be part
of the massage experience a Wellis spa gives you."

Wellis®

Europe's leading spa manufacturer



THINK SPA, THINK WELLIS

THE NEW LEVEL OF SPA EXPERIENCE

EUROPEAN QUALITY, 21st CENTURY TECHNOLOGY

Our highly skilled employees are passionate about delivering premium design and quality wellness solutions to customers around the world by using innovative, sustainable and environment friendly materials and technologies.

We operate with integrity, excellence, openness and respect.





"Be part of the Experience"

Our corporate mission is to provide the best quality product, with the best massage, and relaxation experience, on a competitive price to our customers. All the 600 employees, with 3 factories, within the Wellis family works for the same goal every day, and that is to bring the Wellis wellness experience into your home.

Since the company was founded in 2003, more and more people choose Wellis products throughout Europe. With the pursuit of a healthy lifestyle, the demand for quality wellness products is on the rise. Thanks to continuous growth and development, Wellis is now the largest spa manufacturer in Europe.

Spas, swim spas and their thermal covers, and side panels are produced with the involvement of more than 100 people, in 3 production halls on altogether 20.000 sq.m. area, equipped with enormous, cutting edge manufacturing tools, was motivated by the rising demand of the market, and the pursuit of quality manufacturing technology.



Finished goods are stored in several warehouses, altogether 20.000 sq.m. in the same area.

There is no better proof for the international recognition Wellis receives than the awards our products collect at numerous international expos. This represents the results of excellence and quality, and more than 15 years worth of professional experience. With more than 500 sales points worldwide 15.000 spas are produced each year.

"Innovation - quality - performance"

Let us inform you about what the largest European manufacturer has to offer to you.

Wellis is using a unique 6.35 cm thick polyurethane reinforced acrylic material for the shell from Lucite (USA). Wellis is cooperating with the Gecko Alliance Group, spa pump, and control system producer company, which is the leading manufacturer of the world. They are manufacturing in Canada.

Wellis is offering a 10-year warranty on the spa shell, 7 years for the Lucite acrylic surface, and 3 years warranty on pumps and spa cabinet.

The Wellis factory is located in the middle of Europe. That means fast and safe delivery at a favorable price. Wellis has an over 20.000 sq.m. warehouse in which we are keeping usually more than 3.000 spa and sanitary products on stock to serve urgent orders very quickly.

Wellis is offering exclusive marketing support for its partners. Showroom decoration and design, professional commercial materials, HD videos, photos, and online marketing support. Wellis has its own service support department with an online fault report system and also possibilities to host trainings for our partners' employees. Wellis belongs to the most innovative manufacturers. We have developed online communication and ordering system, the Wellis Online System (WOS).

As a result of its steady development in recent years, Wellis has become Europe's largest spa manufacturer and also entered the American spa manufacturer market – which is considered the stronghold of spa manufacturing. The Company's vision for the coming years is to become one of the world's top manufacturers, offering premium solutions in the wellness segment from the heart of Europe.

EXPERT OPINION

INNOVATION - QUALITY - PERFORMANCE

We requested Dr. András Szabó, specialist in internal medicine, to comment on the positive effects of the spas we produce, and to share with us his personal experience.

“Would you like to sit down?” – I asked my patient automatically, who came through the entrance to my office in a way weirdly similar to the previous patient. The answer was supported by a definite motion, made absolutely clear by non-verbal communication. – **“No, I can’t, my back really hurts!”**

These are the complaints I probably hear the most often during the daily routine of my work, and – like iceberg peaks – they indicate syndromes resulting from the civilizational harm of our age, including a sedentary way of life.

We stay seated in the car, on the subway, in our home office, and at our place of work. Our head is tilted in the same position for hours waiting for the working day to end, and often our rest time is compromised by a poorly chosen pillow or mattress.

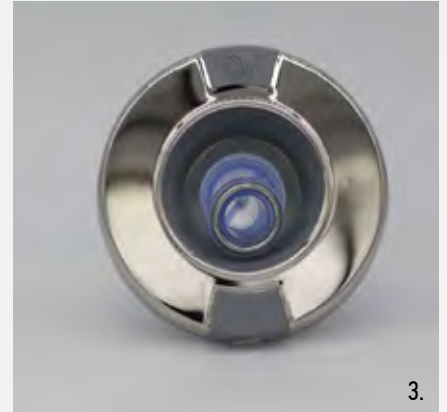
Degenerative conditions result from wear on the spine and weight-bearing joints caused by calcification, due to our sedentary lifestyle and the monotony of work areas. Injuries from an ill-timed sporting event may similarly result in disability that can be prolonged for weeks.

During the acceleration of our comfortable lifestyle, usually those activities are omitted which could compensate for the forced postures causing such conditions. We spend a lot on healthy foods, or on buying various unnecessary cardio machines to deal with extra weight, and it is only the compassionate touch of our spouse that sometimes reminds us of the life-saving, neck-massaging water jets in open winter spas.

“Don’t stop!” sounds the cry for relaxation after a half-minute massage, but it is impossible to expect helping hands to continuously save us at the end of a busy day. However, this experience of full relaxation should not be restricted to an exceptional weekend once a year – it can be made part of your home!

You can experience this regeneration of not only the neck muscles, but also to all the groups of muscles in the core, and also imitate the experience of weightlessness! In your own home!!





”
While designing its spas, Wellis considered special anatomical aspects, and designed jets suitable for targeting the skeletal muscles and connective tissues that are most exposed to everyday loads.
”

Similar to the “tangentor” technique routinely used in rheumatology treatments, the turbulent flow of water increases the blood supply to your muscles, relaxing them, and thus speeds up metabolism and regeneration. By reaching different muscle groups – in particular the muscles of the lower limbs – this has positive physiological effects not only on striated muscle tissue, but also reduces leg tension sensations by supporting venous circulation, and thus reduces the incidence of lower limb swelling as well!

The rotating head units, products of modern technical innovation, are able to reach larger areas with lower pressure, while fixed jets can massage body fibers more deeply. Thanks to the unique MagmaJet™, you can experience total relaxation and flotation, and be regenerated by relaxing all of your muscle groups and taking a load off your joints!



1. W-Flow system – 180m³/h capacity, 50-60 cm flow width.
2. Turbine – capable of moving 215 m³ water per hour, with a power draw of only 8 A.
3. Our rotating jets provide circular, softer massage over a larger body area.
4. Our fixed jets provide an intense massage experience by focusing water spouts on one body part.
5. The MagmaJet™ has the full capacity of a 3HP massage pump. You can lie on the surface and enjoy weightless flotation.



The Company's research group designed treatment areas within the tubs which offer different physiological effects in addition to pure experience. The form of the seats matches the body shape so that you can spend even more hours in the spa. To meet various needs, the seats were designed with a variety of jets in arrangement and composition, so that everyone can find the ideal seat (the arrangement of jets may differ for each tub).

**VARIOUS SITTING AND RECLINING PLACES
CAN BE FORMED THROUGH CUSTOMIZED DESIGN
OF THE DIFFERENT JETS, EACH OFFERING
SPECIFIC MASSAGE THERAPIES.**

It is not only our skeletal and muscle system that needs care to balance everyday loads. Our skin, the organ that communicates with the outside world the most – also requires attention, since everyday mechanical, UV and thermal effects may lead to skin deterioration and premature aging if no attention is paid to regeneration during everyday “use”!

A special function is Oxygen Therapy™, with positive effect – in addition to the ones mentioned above, and supporting venous and lymphatic circulation – to the skin and its components (e.g. sweat glands, sebaceous glands, follicles), too. It not only improves skin oxygenation and hydration, but also removes impurities

The essence of the therapy was to deliver higher levels of oxygen to the subcutaneous connective tissue, which – by stimulating collagen synthesis, metabolism and self-healing processes – led to significant results not only in healing, but also in the prevention of skin diseases.

Inspired by this excellent study and the innovations of the improved oxygen therapy, our innovation, the Oxygen Therapy™ is available in our Everest and Olympus spas!

All the health benefits for skin offered by high-concentration oxygen content in water acting with a physiological effect are now available for everyday use, offered by Wellis spas with Oxygen Therapy™!

The de-stressing of the parasympathetic nervous system's opiate transmitters for complete relaxation can be increased with light therapy and aromatherapy essential oils using aromatherapy cartridges, which complete the complex service offered by Wellis tubs.

“Doctor!” “I have been healed completely!”

“What happened? You were hardly able to walk last Friday!”

“My Wellis spa has been delivered! I need neither sedatives nor painkillers any more! I can relax and rest again! Thank you for the advice, I am completely rejuvenated!”



Dr. András Szabó
specialist in internal medicine



OUR SPAS OFFER THE FOLLOWING MASSAGE SEATS*:

* The layout of the jets may vary for each tub in the different seat designs.

Relax massage seat

It targets the regeneration of the shoulder girdle and the longitudinal trunk muscle tissues, as well as the hip flexor muscles and the knee extensor muscles – the muscle groups most exposed to everyday loads.

Expert massage seat

Its adjustable jets can have physiological effects with customized directions and strength.

Cool down massage seat

The armchair design provides relaxation after training; its psychical and calming effect should be mentioned in addition to the recovery of physiological functions.

Focus massage seat

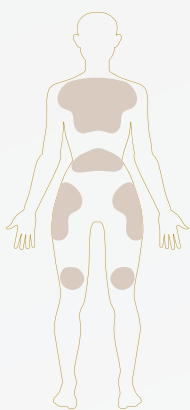
It offers its user an experience similar to the Expert effect, relaxing the longitudinal trunk muscle tissues, and passively exercising the hip and the thigh flexor and extensor muscle groups.

Body flow massage seat

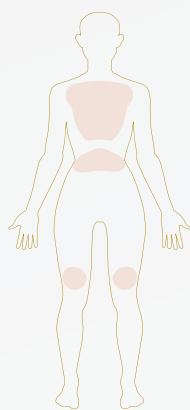
The massage seat with the most intensive physiological effect; in addition to the trunk's muscle fibers, it also has effects on venous and lymphatic circulation in the lower limbs, in this way bringing relief to vein valves.

Intenso massage seat

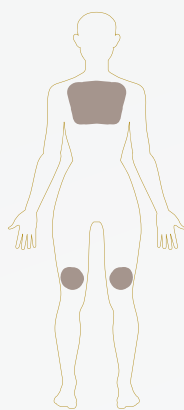
The most refreshing massage seat. The favorite of professional athletes. After exhaustive and intensive training, it ensures the regeneration of the most critical areas, the back and leg muscles.



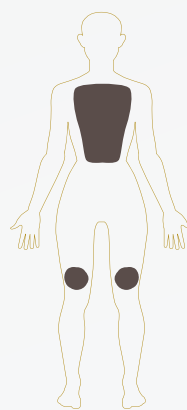
Relax massage seat



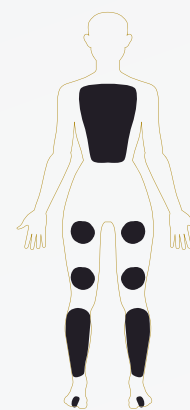
Expert massage seat



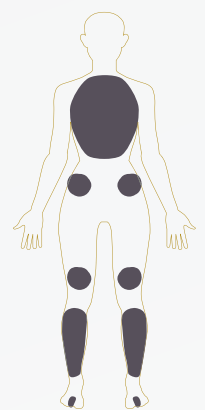
Cool down massage seat



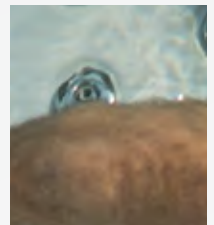
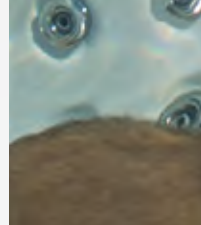
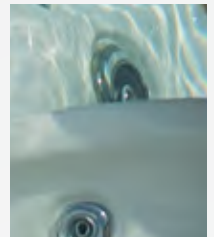
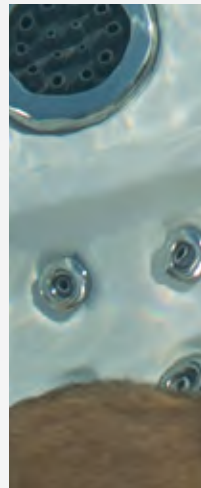
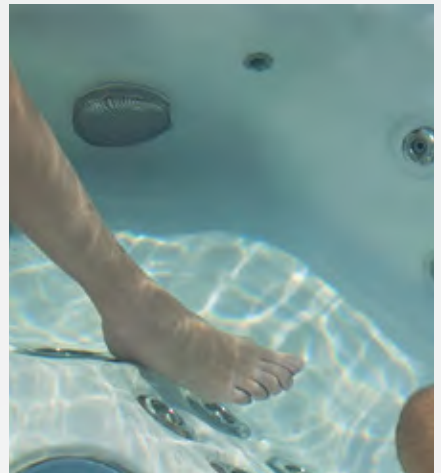
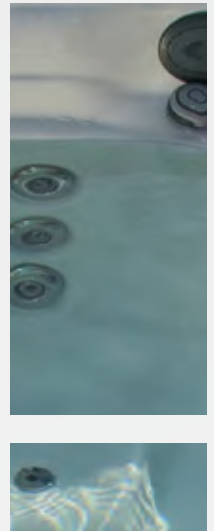
Focus massage seat

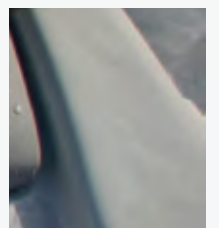
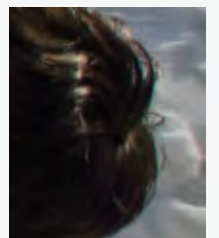
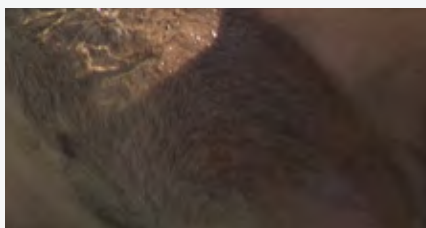
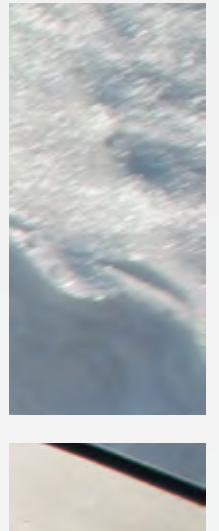


Body flow massage seat



Intenso massage seat





elbrus 230, kilimanjaro, everest, olympus



PEAKLINE PREMIUM MODELS

The PeakLine product line covers our premium models. In addition to a full line of accessories, modern design and novel style, their extra functions and unique solutions make them the outstanding models of the Wellis brand



Quality massage provided by a quality spa

The primary consideration in creating a Wellis product is to enhance the wellness experience. Our spas provide excellent relaxation after a tiring day. Surely in the rushed world, everyone will enjoy an evening of relaxation when you can relax in your spa. You have probably heard about the positive effects of wellness products on health. Wellis-manufactured spas, in addition to providing luxury and comfort, pay close attention to customer satisfaction.

We work exclusively with the highest quality raw materials in the production of our spas, which is backed by many years of supplier experience. Excellent product quality is at least as important to us as it is to our customers. If we did not pay attention to this and strive for continuous improvement, we could never have been at the forefront of spa production in Europe.



Wellis spa - best in winter - video



AROMATHERAPY

When combined with the Wellis hydro massage system the aromatic scents can enhance your mood, and aid deep relaxation. Our spas have a new, improved aroma dispenser. The liquid is dispensed into the water in a liquid form with a pump dispenser..

OXYGEN THERAPY™

Oxygen therapy™ increases the oxygen level in the water by more than 70%. Microbubbles have the ability to penetrate the pores of the skin, remove impurities and provide oxygen for better metabolism. Meanwhile, it gently stimulates the skin surface, helping to hydrate dry skin.

SMARTPHONE APPLICATION

Immediate access and remote control. The in.touch 2 app makes it easy to control your spa via phone or tablet, even different programming of your spa when you're not at home. You can set the water temperature and circulation and you can even check the current status of the spa.

MAGMAJET™

The Wellis Magmajet™ has the full capacity of a 3-horsepower massage motor. You can even lie on it and float in a state of weightlessness.

EXCLUSIVE COLOUR THERAPY MOOD LIGHTING

The exclusive color therapy lighting is a lighting directly below the water level, built into the side wall of the spa, which can consist of 12-20 LEDs, depending on the spa.

STARSIDE SIDECOVER

The StarSide™ cabinet is produced of horizontal side, wood-textured elements and vacuum-formed ABS plastic corner pieces. The built-in RGB LED light works in conjunction with mood lighting inside the spa.

AQUASOUL PRO SOUNDSYSTEM

The sound system installed in the Wellis spas features the latest, high-quality, waterproof elements. You no longer have to worry about CDs, MP3 players or any other cable-connected device, as you can connect to your spa at any time by phone.

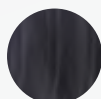
AVAILABLE ACRYLIC & SIDE COVER COLORS AT PEAKLINE RANGE



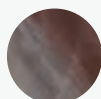
sterling
silver



alba pearl
white



midnight
canyon



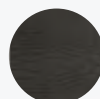
tuscan sun



brown



black



grey



elbrus 230

This spa has enough space for 7 bathers, so you can enjoy the ultimate 'shoulder-to-toe' massage with those who matter the most to you. Also features the Well-Dome™ foot massage system, 78 chrome finished adjustable jets, AquaSoul™ Pro sound system, exclusive chromotherapy LED lighting, lighting waterfall.

Measurements (l × w × h)	2 300 × 2 300 × 900 mm
Reclining / sitting places	0 / 7
Net weight / Water volume	370 kg / 1 180 l
Frame	WPS
Side cover	StarSide™ UV-proof wood textured
Reinforcement	Poli-MAX™
Insulation	Polyfoam (2 cm)
Total number of jets	78
Opt. power requirement	3 × 16A / 400V / 50Hz
Min. power requirement*	1 × 32A / 230V / 50Hz
Pumps	3 × 3 HP, single speed
Circulation pump	W-EC pump (0.25 kW)
Heater	3 kW
Control box / panel	Gecko (IN.YE-5) / SmartTouch
Auxiliary control panel	-
Water sanitization	UV-C system
Cartridge filter	3 × MicroPlus filters
Laminar fountain jets	-
Waterfall	1
Led lights	16 × exclusive LEDs + Central + StarLight™ illum. corner element
Sound system	Aquasoul™ Pro 2.1 Pop-Up
Aromatic therapy	Liquid Aroma (without fragrance)
SmartPhone app - wifi connection	standard
Oxygen therapy	-
Heat exchanger preparation	-
Thermo cover	standard

Options: Scandinavian insulation (3,5 cm)
Lighting jets
Oxygen therapy



kilimanjaro

The Kilimanjaro spa makes relaxation simply unforgettable with a number of comfort features. It has all that required of a premium category spa: AquaSoul™ Pro sound system, SmartPhone application with WiFi connection, 3 pcs 3 horsepower massage pumps, 3 pcs MicroPlus filters and aromatic therapy.

Measurements (l × w × h)	2 300 × 2 300 × 940 mm
Reclining / sitting places	1 / 5
Net weight / Water volume	387 kg / 1 500 l
Frame	WPS
Side cover	StarSide™ UV-proof wood textured
Reinforcement	Poli-MAX™
Insulation	Polyfoam (2 cm)
Total number of jets	64
Opt. power requirement	3 × 20A / 400V / 50Hz
Min. power requirement*	1 × 32A / 230V / 50Hz
Pumps	3 × 3 HP, single speed
Circulation pump	W-EC pump (0.25 kW)
Heater	3 kW
Control box / panel	Gecko (IN.YE-5) / SmartTouch
Auxiliary control panel	-
Water sanitization	UV-C system
Cartridge filter	3 × MicroPlus filters
Laminar fountain jets	2 × 1 lighting
Waterfall	-
Led lights	13 × exclusive LEDs + Central + StarLight™ illum. corner element
Sound system	Aquasoul™ Pro 2.1 Pop-Up
Aromatic therapy	Liquid Aroma (without fragrance)
SmartPhone app - wifi connection	standard
Oxygen therapy	-
Heat exchanger preparation	-
Thermo cover	standard

Options: Scandinavian insulation (3,5 cm)
Lighting jets
Oxygen therapy



Oxygen therapy™

everest

The pride of the Wellis brand is the Everest spa, our most successful product in the premium segment. The additional control panels and the WiFi SmartPhone application provide a comfort level that has never been experienced before. Oxygen Therapy is added as a standard equipment for renewing skin.

Measurements (l × w × h)	2 360 × 2 360 × 950 mm
Reclining / sitting places	2 / 3
Net weight / Water volume	452 kg / 1 500 l
Frame	WPS
Side cover	StarSide™ UV-proof wood textured
Reinforcement	Poli-MAX™
Insulation	Polyfoam (2 cm)
Total number of jets	88
Opt. power requirement	3 × 20A / 400V / 50Hz
Min. power requirement*	1 × 32A / 230V / 50Hz
Pumps	2 × 3 HP, double speed 2 × 2 HP, single speed
Circulation pump	W-EC pump (0.25 kW)
Heater	3 kW
Control box / panel	Gecko (IN.YT-8) / SmartTouch
Auxiliary control panel	1 × 1 button + 1 × 4 buttons
Water sanitization	UV-C system
Cartridge filter	3 × MicroPlus filters
Laminar fountain jets	2
Waterfall	1
Led lights	12 × exclusive LEDs + Lighting jets + StarLight™ illum. corner element
Sound system	Aquasoul™ Pro 4.1 Pop-Up/flat
Aromatic therapy	Liquid Aroma (without fragrance)
SmartPhone app - wifi connection	standard
Oxygen therapy	standard
Heat exchanger preparation	standard
Thermo cover	standard

Options: Scandinavian insulation (3,5 cm)

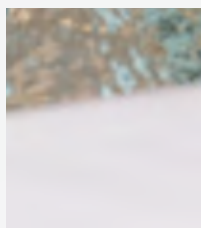
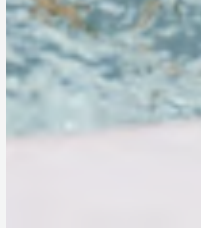
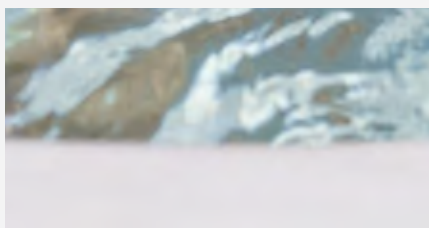
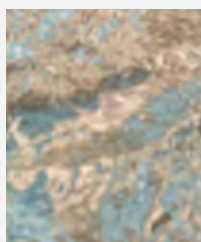
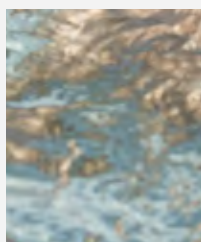
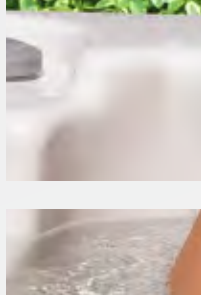
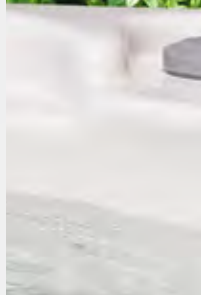
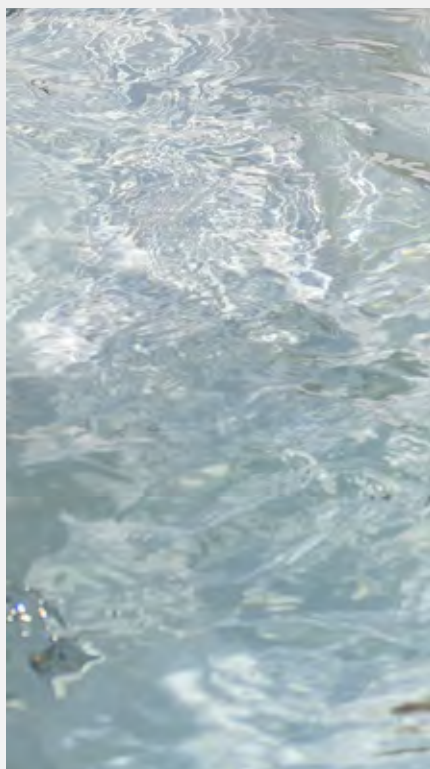
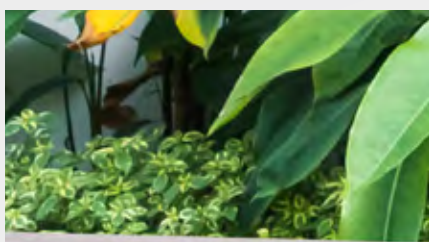


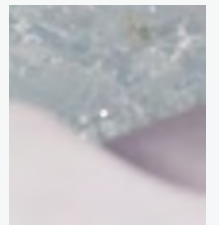
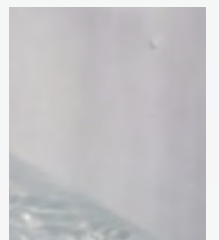
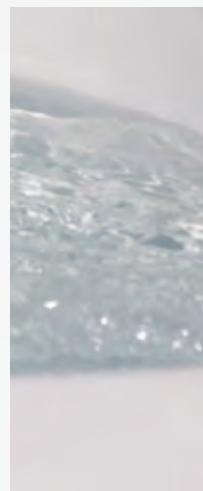
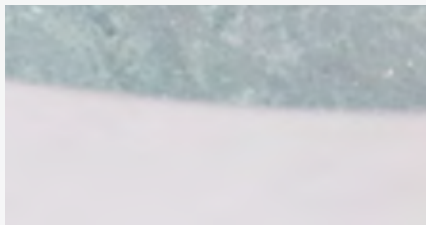
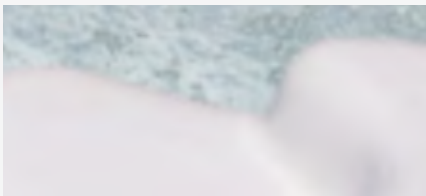
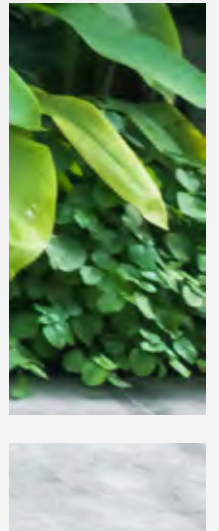
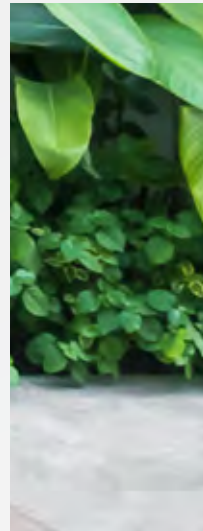
olympus

Olympus provides numerous potential uses. It is exceptionally suitable for larger get-togethers with friends or family members. It is also suitable for athletes to relax or stretch their muscles. Enjoy the beneficial effect of warm water with Olympus which creates a spa experience more exceptional than ever before.

Measurements (l × w × h)	3 540 × 2 300 × 980 mm
Reclining / sitting places	2 / 7
Net weight / Water volume	900 kg / 2 331 l
Frame	Stainless steel
Side cover	HorizontSide™ UV-proof wood textured
Reinforcement	Fiberglass reinforced
Insulation	Polyfoam (2 cm)
Total number of jets	88
Opt. power requirement	3 × 20A / 400V / 50Hz
Min. power requirement*	1 × 32A / 230V / 50Hz
Pumps	1 × 3 HP, double speed 2 × 2 HP single speed 1 × 3 HP, single speed
Circulation pump	1 × 1.2 HP
Heater	3 kW
Control box / panel	Gecko (IN.YT-8) / SmartTouch
Auxiliary control panel	1 × 1 button + 1 × 4 buttons
Water sanitization	UV-C system
Cartridge filter	1 × MicroPlus filter
Laminar fountain jets	2
Waterfall	1
Led lights	20 × exclusive LEDs + Lighting jets
Sound system	Aquasoul™ Pro 4.1 Pop-Up
Aromatic therapy	Liquid Aroma (without fragrance)
SmartPhone app - wifi connection	standard
Oxygen therapy	-
Heat exchanger preparation	standard
Thermo cover	standard

Options: Scandinavian insulation (3,5 cm)



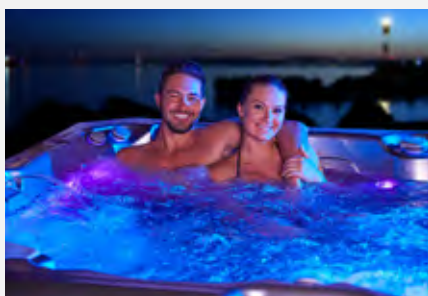


manhattan, marbella, elbrus, palermo, malaga, acapulco deep-in



CITYLINE PREMIUM QUALITY

CityLine product line is a perfect choice for customers for whom the proper balance of value for money and premium quality is important. Our compact models with their unique equipment ensure excellent wellness experiences for any family.



Smart spas for smart users

Wellis presents the latest smart solutions for spas, which will guarantee up-to-date technology experiences. In.touch 2 is a smart control integrated into the spa, and is accompanied by an application running on a smart device, allowing you to easily control your spa from IOS or Android devices.

Spas with in.touch 2 are connected via a wifi network to the home Internet connection and provide remote maintenance. You certainly do not want to spend a lot of time checking the condition of your spa, and in case of an error you want to get the fastest solution possible, and it's absolutely available with our new system.

Choose Europe's leading spa and its clever solutions, so that bathing time is truly a self-indulgent recreation and quality experience for you and your family!



CityLine features - video



AROMATHERAPY

When combined with the Wellis hydro massage system the aromatic scents can enhance your mood, and aid deep relaxation. Our spas have a new, improved aroma dispenser. The liquid is dispensed into the water in a liquid form with a pump dispenser.

SPECIAL NECK MASSAGE JETS

The more comfortable, improved, ergonomic design of the unique, vertical massage jets and headrests makes your shoulders easier from the effects of daily stress.

MYMUSIC™ SOUNDSYSTEM

The sound system installed in CityLine spas features the latest, high-quality, waterproof elements. Extended Bluetooth range, stronger subwoofer (300 W), modern speaker design. Can be connected via mobile phone.

UV-C WATER SANITIZER SYSTEM

UV-C has long been a preferred system of sanitizing water in commercial swimming spas. This water treatment is hypo-allergenic and practically 100% effective in destroying bacteria, viruses and water bourn contaminants.

EXCLUSIVE COLOUR THERAPY MOOD LIGHTING

The exclusive color therapy lighting is a lighting directly below the water level, built into the side wall of the spa, which can consist of 12-20 LEDs, depending on the spa.

SMARTPHONE APPLICATION

The in.touch 2 iOS and Android app makes it easy to control your spa via phone or tablet, even different programming of your spa when you're not at home.

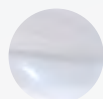
CITYLINE CORNER ELEMENT

New design, more precise and easier fitting, thanks to the new technology. Stylish look due to precise alignments and new technology.

SMARTTOUCH CONTROL PANEL

A full featured keypad with color capacitive touch screen display. Parting ways with physical buttons, keys and overlays, our touch screen keypad is fun to use, simple to learn and features an intuitive and engaging one level menu interface.

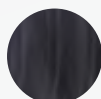
AVAILABLE ACRYLIC & SIDE COVER COLORS AT CITYLINE RANGE



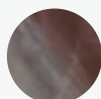
sterling
silver



alba pearl
white



midnight
canyon



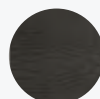
tuscan sun



brown



black



grey



palermo

Palermo is the perfect spa for families. The neck, shoulder, waist and hip massaging jets in the main seat have positive effects on the blood circulation of these areas. 1 captain seat and two regular seats, lighting waterfall, two fountain jets, aromatic therapy and a 2.1 hifi system as part of the standard equipment.

Measurements (l × w × h)	2 180 × 2 180 × 900 mm
Reclining / sitting places	2 / 3
Net weight / Water volume	335 kg / 1 050 l
Frame	WPS
Side cover	HorizontSide™ with StarSide™ corner
Reinforcement	Poli-MAX™
Insulation	Polyfoam (2 cm)
Total number of jets	42
Opt. power requirement	3 × 16A / 400V / 50Hz
Min. power requirement*	1 × 25A / 230V / 50Hz
Pumps	2 × 3 HP, single speed
Circulation pump	W-EC pump (0.25 kW)
Heater	3 kW
Control box / panel	Gecko (IN.YE-3) / SmartTouch
Auxiliary control panel	-
Water sanitization	UV-C system
Cartridge filter	1 × MicroPlus filter
Laminar fountain jets	2 × 1 lighting
Waterfall	1
Led lights	16 × exclusive LEDs + StarSide™ corner element l. + illum. control valves
Sound system	MyMusic™ 2.1
Aromatic therapy	Liquid Aroma (without fragrance)
SmartPhone app - wifi connection	standard
Oxygen therapy	-
Heat exchanger preparation	-
Thermo cover	standard

Options: Scandinavian insulation (3,5 cm)
Lighting jets



palermo standard

The Palermo Standard is a perfect family spa. It combines durability, ergonomics and energy-efficiency in one product. It has 2 reclining places, 1 captain seat, and two regular seats, lighting waterfall two fountain jets, aromatic therapy and a 2.0 hifi system as part of the standard equipment.

Measurements (l × w × h)	2 180 × 2 180 × 900 mm
Reclining / sitting places	2 / 3
Net weight / Water volume	335 kg / 1 050 l
Frame	WPS
Side cover	HorizontSide™ with StarSide™ corner
Reinforcement	Poli-MAX™
Insulation	Polyfoam (2 cm)
Total number of jets	42
Opt. power requirement	3 × 16A / 400V / 50Hz
Min. power requirement*	1 × 25A / 230V / 50Hz
Pumps	2 × 3 HP, single speed
Circulation pump	W-EC pump (0.25 kW)
Heater	3 kW
Control box / panel	Gecko (IN.YE-3) / Easy7
Auxiliary control panel	-
Water sanitization	Ozone generator
Cartridge filter	1 × MicroPlus filter
Laminar fountain jets	2 × 1 lighting
Waterfall	1
Led lights	16 × exclusive LEDs + StarSide™ corner element l. + illum. control valves
Sound system	MyMusic™ 2.0
Aromatic therapy	-
SmartPhone app - wifi connection	-
Oxygen therapy	-
Heat exchanger preparation	-
Thermo cover	standard

Options: Scandinavian insulation (3,5 cm)



malaga

The Malaga with its innovative solutions (switchable shoulder and neck massage jets) provides a relaxing massage after a busy day. The 40 massage jets, the enhanced-power massage pumps, aromatic therapy, are all responsible for a relaxing massage experience.

Measurements (l × w × h)	2 180 × 2 180 × 900 mm
Reclining / sitting places	1 / 5
Net weight / Water volume	330 kg / 1 136 l
Frame	WPS
Side cover	HorizontSide™ with StarSide™ corner
Reinforcement	Poli-MAX™
Insulation	Polyfoam (2 cm)
Total number of jets	40
Opt. power requirement	3 × 16A / 400V / 50Hz
Min. power requirement*	1 × 25A / 230V / 50Hz
Pumps	2 × 3 HP, single speed
Circulation pump	W-EC pump (0.25 kW)
Heater	3 kW
Control box / panel	Gecko (IN.YE-3) / SmartTouch
Auxiliary control panel	-
Water sanitization	UV-C system
Cartridge filter	1 × MicroPlus filter
Laminar fountain jets	3 × 1 lighting
Waterfall	1
Led lights	16 × exclusive LEDs + StarSide™ illum. corner element + illum. control valves
Sound system	MyMusic™ 2.1
Aromatic therapy	Liquid Aroma (without fragrance)
SmartPhone app - wifi connection	standard
Oxygen therapy	-
Heat exchanger preparation	-
Thermo cover	standard

Options: Scandinavian insulation (3,5 cm)
Lighting jets



malaga standard

A bottle of champagne, a few glasses, a cheerful company and you can start having fun. The Malaga standard spa has everything you need for an all-night party. Thanks to the increased number of jets and performance, all guests can enjoy a pleasant massage in each seat.

Measurements (l × w × h)	2 180 × 2 180 × 900 mm
Reclining / sitting places	1 / 5
Net weight / Water volume	330 kg / 1 136 l
Frame	WPS
Side cover	HorizontSide™ with StarSide™ corner
Reinforcement	Poli-MAX™
Insulation	Polyfoam (2 cm)
Total number of jets	40
Opt. power requirement	3 × 16A / 400V / 50Hz
Min. power requirement*	1 × 25A / 230V / 50Hz
Pumps	2 × 3 HP, single speed
Circulation pump	W-EC pump (0.25 kW)
Heater	3 kW
Control box / panel	Gecko (IN.YE-3) / Easy7
Auxiliary control panel	-
Water sanitization	Ozone generator
Cartridge filter	1 × MicroPlus filter
Laminar fountain jets	3 × 1 lighting
Waterfall	1
Led lights	16 × exclusive LEDs + StarSide™ illum. corner element + illum. control valves
Sound system	MyMusic™ 2.0
Aromatic therapy	-
SmartPhone app - wifi connection	-
Oxygen therapy	-
Heat exchanger preparation	-
Thermo cover	standard

Options: Scandinavian insulation (3,5 cm)



manhattan

The new Manhattan is a 3 person spa for smaller places, with all the benefits of a fully-equipped hot tub. 3 HP hydromassage pump serves 30 massage jets, including the 2 powerful shoulder massage jets at the lounger seat. All the spa functions and the MyMusic sound system can be controlled from the topside panel.

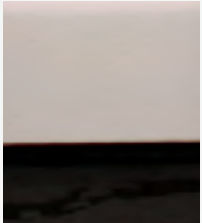
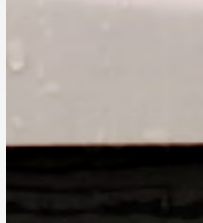
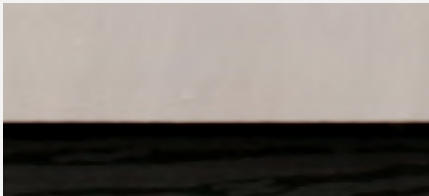
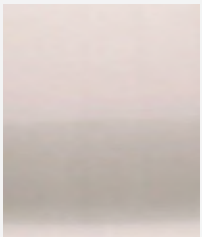
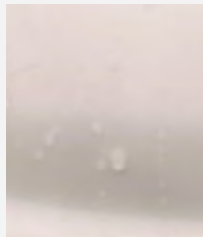
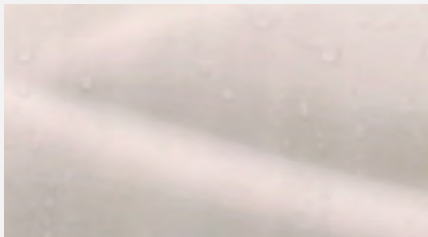
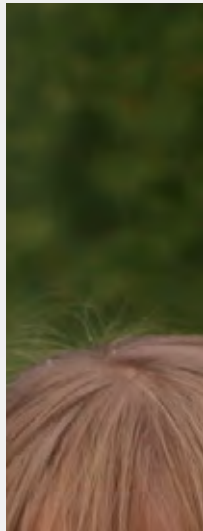
Measurements (l x w x h)	2 010 x 1 530 x 850 mm
Reclining / sitting places	1 / 2
Net weight / Water volume	280 kg / 468 l
Frame	WPS
Side cover	HorizontSide™ with StarSide™ corner
Reinforcement	Poli-MAX™
Insulation	Polyfoam (2 cm)
Total number of jets	30
Opt. power requirement	1 x 32A / 230V / 50Hz
Min. power requirement*	
Pumps	1 x 3 HP, single speed
Circulation pump	W-EC pump (0.25 kW)
Heater	3 kW
Control box / panel	Gecko (IN.YE-3) / SmartTouch
Auxiliary control panel	-
Water sanitization	UV-C system
Cartridge filter	1 x MicroPlus filter
Laminar fountain jets	2 x 1 lighting
Waterfall	-
Led lights	10 x exclusive LEDs + StarSide™ corner element l. + illum. control valves
Sound system	MyMusic™ 2.1
Aromatic therapy	Liquid Aroma (without fragrance)
SmartPhone app - wifi connection	standard
Oxygen therapy	-
Heat exchanger preparation	-
Thermo cover	standard

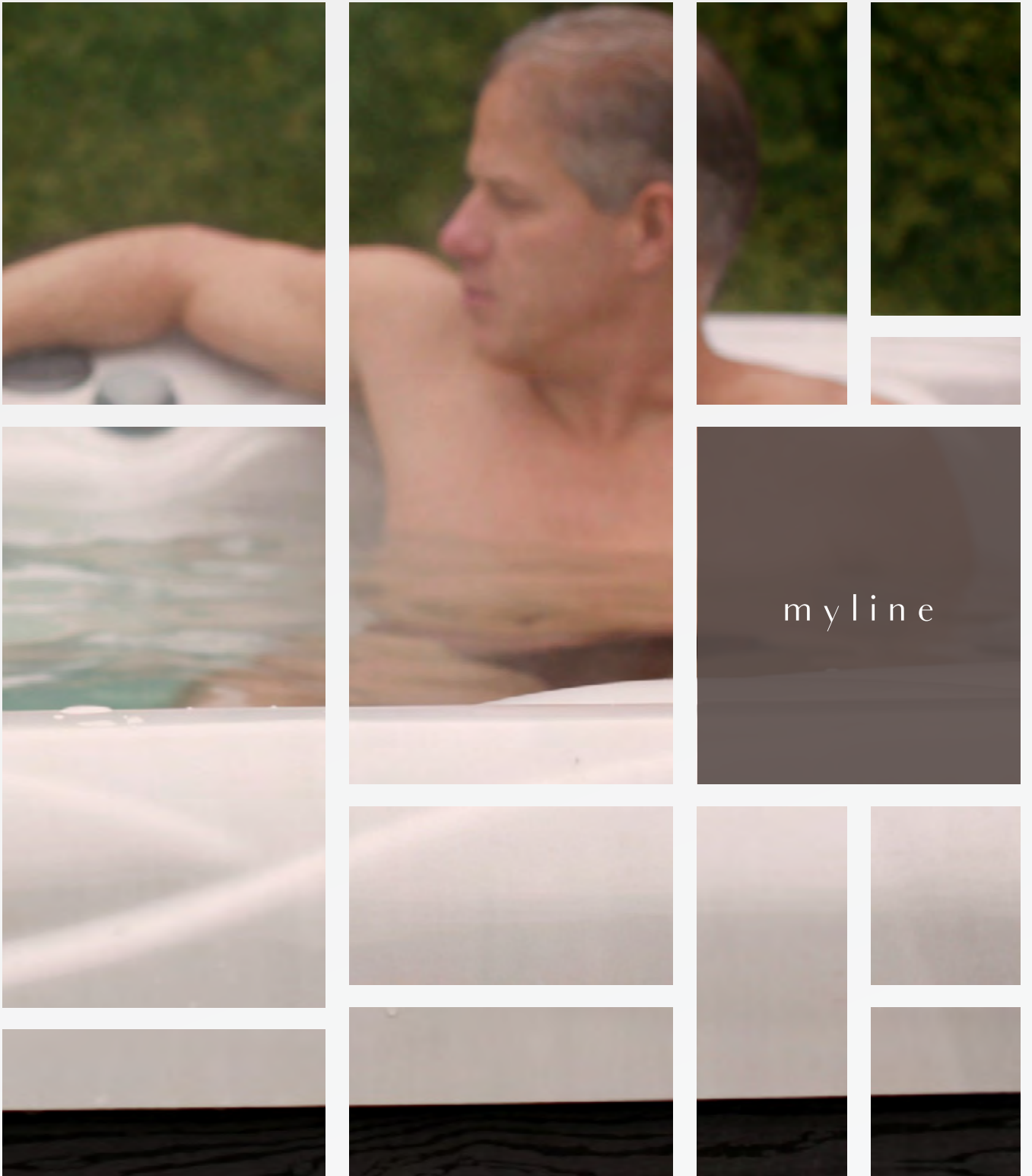
Options: Scandinavian insulation (3,5 cm)
Lighting jets



A spa's soothing waters decrease stress and help you unwind.







mars, pluto, jupiter, venus, saturn, kilimanjaro standard



MYLINE FOR THE FAMILY

MyLine products represent the entry-level category of the Wellis brand: excellent prices, user-friendly experiences, stylish and well-composed looks. Over 5 models are available to meet all of our customer's needs.



On the way to become one of the best producers

In addition to experience, expertise, constant renewal, we need to be truly committed to what we want to do. At Wellis, from the very beginning, we purposefully follow the direction we need to take in order to gain the recognition of our customers.

The 15 years since the company was founded in 2003 seem to be both a short and a long period at Wellis. We have managed to achieve tremendous growth, with which our products have become one of the top manufacturers in domestic and export trade, creating a unique design and style. Each of the improvements and improvements was experienced by Wellis itself, which further fueled its development. We hope that the next 15 years will bring our company closer to becoming one of the world's number one pool manufacturers, and that the number of satisfied Wellis product owners will continue to grow.



Wellis Jupiter spa - video



MYMUSIC™ SOUND SYSTEM

The Wellis sound system features the newest top quality waterproof elements. Increased Bluetooth range, more powerful subwoofer (300 W), modern speaker design. Connectable via your mobile phone.

MYJET™ NECK AND SHOULDER MASSAGE

We've designed in special downward facing neck and shoulder jets for the ultimate stress relief massage. Each contour of this intensive massage seat matches your body shape so that every one of the many jets provides a perfect hydro-massage experience.

MYHIP™ JETS

Professional waist and hip massage jets help fat cells, accumulated around the hip to disappear. It was originally developed for women, it is suitable for athletes and for those whom looking for the perfect massage.

EASY4 CONTROL PANEL

The control panel brings all the features you really need to a keypad. Compact, with a big LCD screen; bright enough to be seen throughout the day; simple enough to use in the middle of the night; solidly built.

COLOUR THERAPY MOOD LIGHTING

The application of this knowledge is now known as chromotherapy and is widely used for helping with relaxation, destressing and mood enhancement. Our chromotherapy system is based upon four different colours: green, yellow, blue, red.

MYSEAT™ – FOR YOU AND YOUR SIGNIFICANT OTHER

In designing the MySeat™ reclining place, our designers eliminated the inconvenience caused by height differences. The ergonomic design of the heel rest provides a stable reclining area both for male and female customers.

OZONE GENERATOR

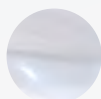
This device produces ozone, which, when mixed with water, is a powerful oxidant that helps to destroy bacteria, viruses, and algae that could be present in the water.

PLUG&PLAY

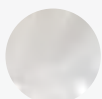
The simplest way for installing a spa. Fill up your spa, simply plug the circuit breaker plug into a main socket, test and reset the circuit using the clearly marked buttons and then use your spa.

AVAILABLE ACRYLIC & SIDE COVER COLORS AT MYLINE RANGE

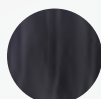
*Mars model is available only in Alba Pearl White, Sterling Silver and Tuscan Sun acrylic colors.



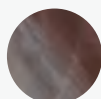
sterling
silver



alba pearl
white



midnight
canyon



tuscan sun



grey



m a r s

This compact spa for 3 will fit into the smallest of places, yet features two full stretch-out lounge beds. Our exclusive mySeat™ ensures the perfect fit for every-body. The seating is full depth, yet at just 75 cm high, the Mars will through many doorways and narrow gaps making for quick easy installation.

Measurements (l × w × h)	2 130 × 1 600 × 750 mm
Reclining / sitting places	2 / 1
Net weight / Water volume	170 kg / 685 l
Frame	Impregnated solid wood
Side cover	HorizontSide™ UV-proof wood textured
Reinforcement	Poli-MAX™
Insulation	Polyfoam (1 cm)
Total number of jets	37
Opt. power requirement	1 × 25A / 230V / 50Hz
Min. power requirement*	1 × 16A / 230V / 50Hz
Pumps	1 × 2 HP, double speed
Circulation pump	-
Heater	3 kW
Control box / panel	Gecko (IN.YJ-2) / Easy4
Auxiliary control panel	-
Water sanitization	Ozone generator
Cartridge filter	1 × Superfine filter
Laminar fountain jets	-
Waterfall	-
Led lights	12 × exclusive LEDs
Sound system	MyMusic™ 2.0
Aromatic therapy	-
SmartPhone app - wifi connection	-
Oxygen therapy	-
Heat exchanger preparation	-
Thermo cover	standard

Options: SmartPhone app with wifi connection
Scandinavian insulation (3,5 cm)
Plug&Play



p l u t o

This spa provides enough room for as many as 5 people, and it still fits even small spaces comfortably. This spa is designed with two reclining places, using the My-Seat™ feature. In addition, one of the seats is equipped with MyJets™ design, which eliminates neck and shoulder pains.

Measurements (l × w × h)	2 000 × 2 000 × 890 mm
Reclining / sitting places	2 / 3
Net weight / Water volume	247 kg / 956 l
Frame	Impregnated solid wood
Side cover	HorizontSide™ UV-proof wood textured
Reinforcement	Poli-MAX™
Insulation	Polyfoam (1 cm)
Total number of jets	42
Opt. power requirement	1 × 25A / 230V / 50Hz
Min. power requirement*	1 × 16A / 230V / 50Hz
Pumps	1 × 3 HP, double speed
Circulation pump	-
Heater	3 kW
Control box / panel	Gecko (IN.YJ-2) / Easy4
Auxiliary control panel	-
Water sanitization	Ozone generator
Cartridge filter	2 × Superfine filters
Laminar fountain jets	-
Waterfall	-
Led lights	16 × exclusive LEDs
Sound system	MyMusic™ 2.0
Aromatic therapy	-
SmartPhone app - wifi connection	-
Oxygen therapy	-
Heat exchanger preparation	-
Thermo cover	standard

Options: SmartPhone app with wifi connection
Scandinavian insulation (3,5 cm)
Plug&Play



jupiter

Jupiter spa has ergonomically designed seats with a total of 46 massage jets, anti slip footmassaging bottom and access step, 2.1 sound system with bluetooth connection and a bottle holder. The perfectly equipped lounge seat makes it everyone's favourite place.

Measurements (l × w × h)	2 000 × 2 000 × 870 mm
Reclining / sitting places	1 / 5
Net weight / Water volume	226 kg / 1 100 l
Frame	Impregnated solid wood
Side cover	HorizontSide™ UV-proof wood textured
Reinforcement	Poli-MAX™
Insulation	Polyfoam (1 cm)
Total number of jets	46
Opt. power requirement	1 × 25A / 230V / 50Hz
Min. power requirement*	1 × 16A / 230V / 50Hz
Pumps	1 × 3 HP, double speed
Circulation pump	-
Heater	3 kW
Control box / panel	Gecko (IN.YJ-2) / Easy4
Auxiliary control panel	-
Water sanitization	Ozone generator
Cartridge filter	1 × Superfine filter
Laminar fountain jets	2
Waterfall	-
Led lights	15 × exclusive LEDs
Sound system	MyMusic™ 2.0
Aromatic therapy	-
SmartPhone app - wifi connection	-
Oxygen therapy	-
Heat exchanger preparation	-
Thermo cover	standard

Options: SmartPhone app with wifi connection
 Scandinavian insulation (3,5 cm)
 Plug & Play



venus

Venus is our mid sized model but packs more than enough power for 6 bathers at once from its 49 jets and dual pump system. Just settle back into our exclusive my-SEAT™ lounge and relax, or enjoy a invigorating massage from one of the intensive therapy seats. Chromotherapy mood lighting pack is also included.

Measurements (l × w × h)	2 150 × 2 150 × 870 mm
Reclining / sitting places	1 / 5
Net weight / Water volume	330 kg / 1 450 l
Frame	Impregnated solid wood
Side cover	HorizontSide™ UV-proof wood textured
Reinforcement	Poli-MAX™
Insulation	Polyfoam (1 cm)
Total number of jets	49
Opt. power requirement	1 × 32A / 230V / 50Hz
Min. power requirement*	
Pumps	1 × 2 HP, double speed 1 × 2 HP, single speed
Circulation pump	-
Heater	3 kW
Control box / panel	Gecko (IN.YE-3) / Easy4
Auxiliary control panel	-
Water sanitization	Ozone generator
Cartridge filter	2 × Superfine filters
Laminar fountain jets	-
Waterfall	-
Led lights	18 × exclusive LEDs
Sound system	MyMusic™ 2.0
Aromatic therapy	-
SmartPhone app - wifi connection	-
Oxygen therapy	-
Heat exchanger preparation	-
Thermo cover	standard

Options: SmartPhone app with wifi connection
 Scandinavian insulation (3,5 cm)



saturn

Big and bold with 50 powerful fully adjustable stainless steel jets providing class leading hydro massage to the two fully jetted lounge beds, our exclusive total body workout seat and two additional seats. We've also included our programmable mood lighting. This large family spa simply has it all.

Measurements (l × w × h)	2 300 × 2 300 × 880 mm
Reclining / sitting places	2 / 3
Net weight / Water volume	296 kg / 1 400 l
Frame	Impregnated solid wood
Side cover	HorizontSide™ UV-proof wood textured
Reinforcement	Poli-MAX™
Insulation	Polyfoam (1 cm)
Total number of jets	50
Opt. power requirement	3 × 16A / 400V / 50Hz
Min. power requirement*	1 × 25A / 230V / 50Hz
Pumps	1 × 2 HP, double speed 1 × 2 HP, single speed
Circulation pump	-
Heater	3 kW
Control box / panel	Gecko (IN.YE-3) / Easy4
Auxiliary control panel	-
Water sanitization	Ozone generator
Cartridge filter	2 × Superfine filters
Laminar fountain jets	-
Waterfall	-
Led lights	18 × exclusive LEDs
Sound system	MyMusic™ 2.0
Aromatic therapy	-
SmartPhone app - wifi connection	-
Oxygen therapy	-
Heat exchanger preparation	-
Thermo cover	standard

Options: SmartPhone app with wifi connection
Scandinavian insulation (3,5 cm)

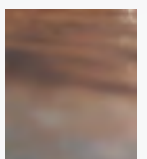
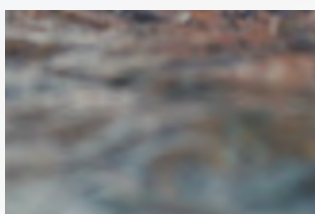
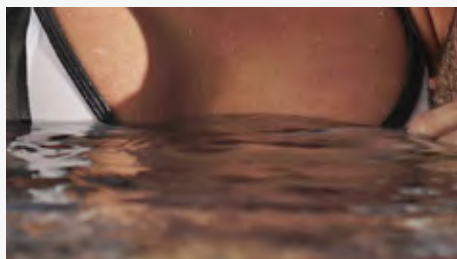
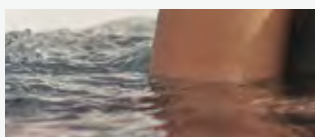
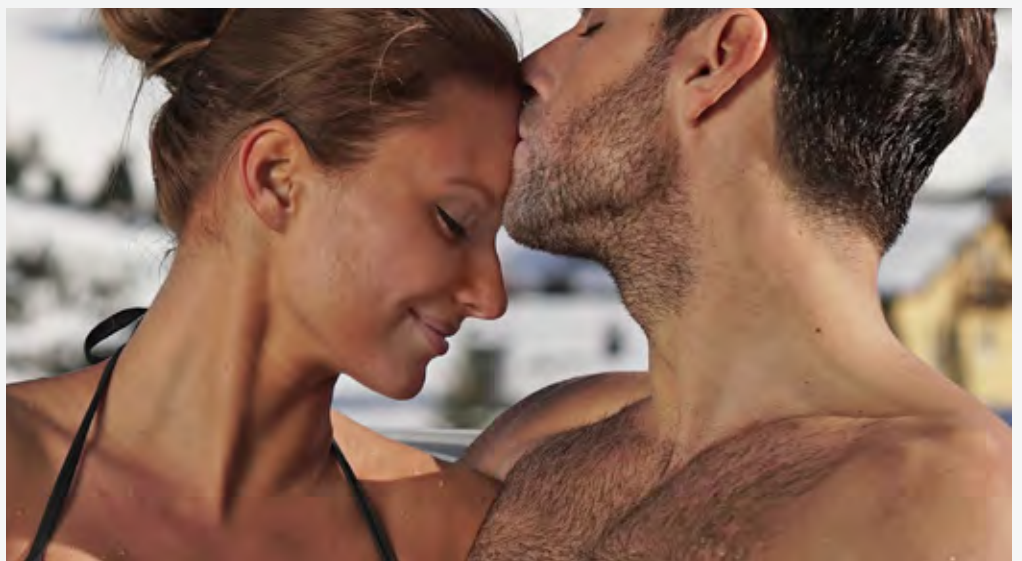
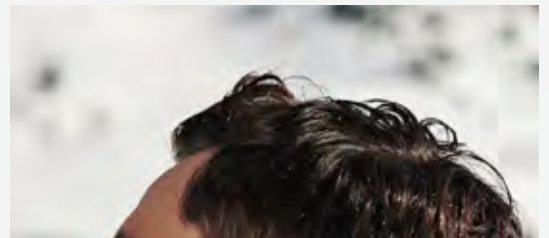
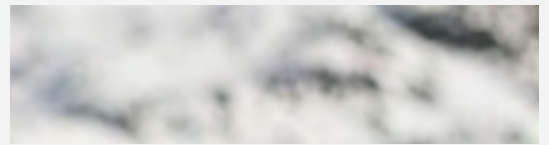
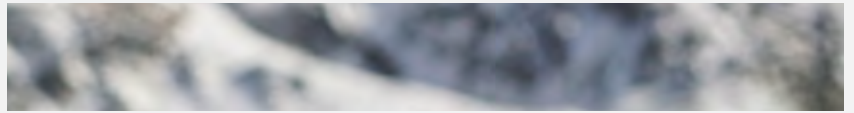
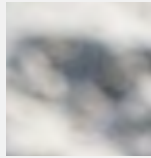
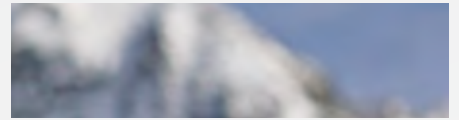
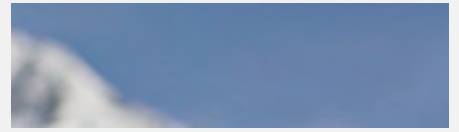
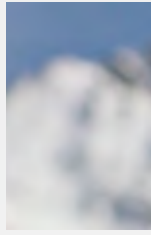


kilimanjaro standard

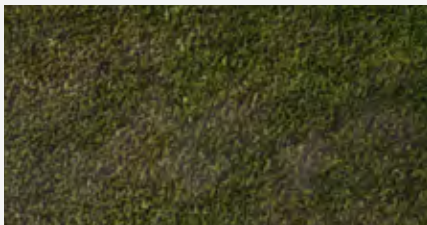
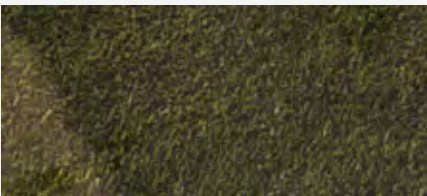
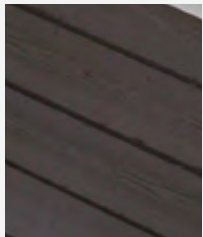
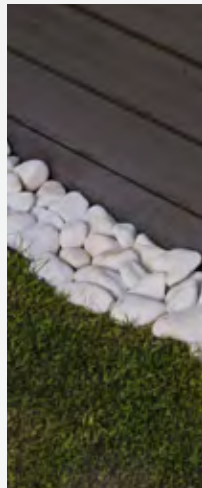
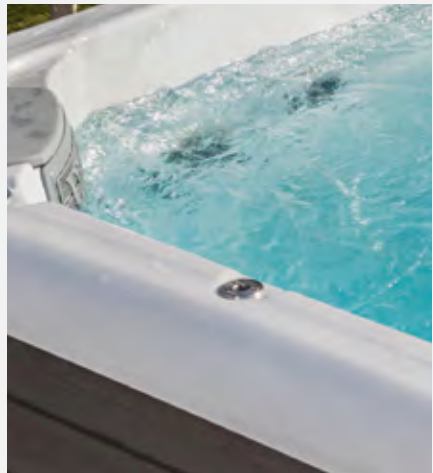
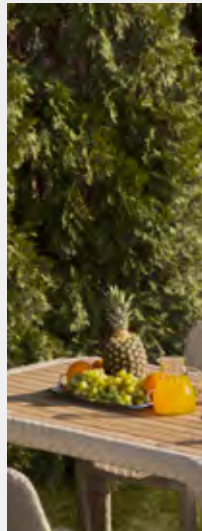
Get refreshed from head to toe in the comfortable recliner or seats in Kilimanjaro standard spa. With this model you can easily buy a really premium product in terms of size and design, however, it can be yours at very reasonable price! Unique appearance with affordability!

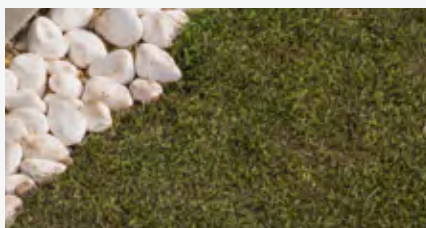
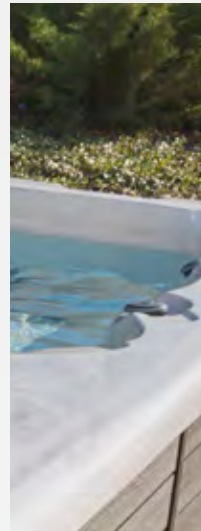
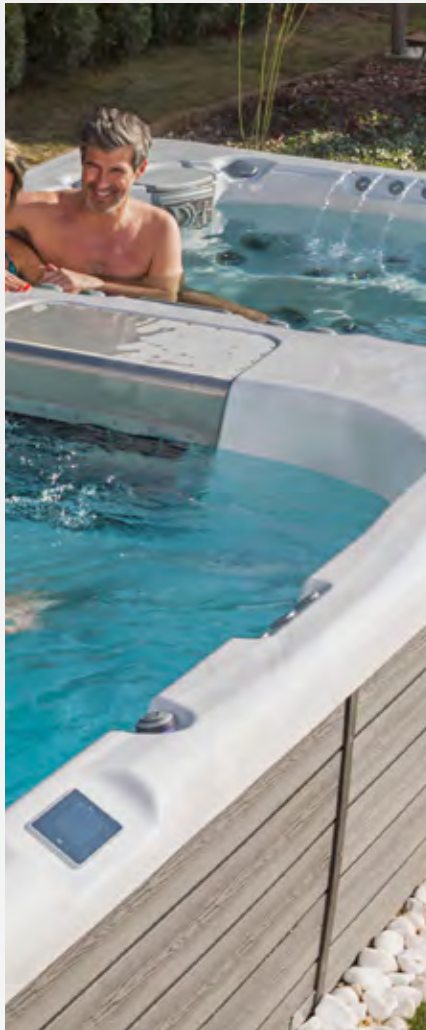
Measurements (l × w × h)	2 300 × 2 300 × 940 mm
Reclining / sitting places	1 / 5
Net weight / Water volume	387 kg / 1 500 l
Frame	WPS
Side cover	HorizontSide™ UV-proof wood textured
Reinforcement	Poli-MAX™
Insulation	Polyfoam (2 cm)
Total number of jets	52
Opt. power requirement	3 × 16A / 400V / 50Hz
Min. power requirement*	1 × 25A / 230V / 50Hz
Pumps	2 × 3 HP, single speed
Circulation pump	W-EC pump (0.25 kW)
Heater	3 kW
Control box / panel	Gecko (IN.YE-3) / Easy7
Auxiliary control panel	-
Water sanitization	Ozone generator
Cartridge filter	3 × MicroPlus filters
Laminar fountain jets	2 × 1 lighting
Waterfall	-
Led lights	13 × exclusive LEDs
Sound system	MyMusic™ 2.0
Aromatic therapy	-
SmartPhone app - wifi connection	-
Oxygen therapy	-
Heat exchanger preparation	-
Thermo cover	standard

Options: Scandinavian insulation (3,5 cm)
SmartPhone app - wifi connection



Bathing in the spa raises your
body temperature, helping you to relax.





rio grande w-flow, rio grande turbine, amazonas w-flow, amazonas turbine, danube w-flow, danube turbine



SWIMLINE

PERFECT WORKOUT

SwimLine product line combines a perfect workout program and a joyful massage experience with minimum space requirement. Thanks to the counter-current system developed by Wellis, you can enjoy the sensation of relaxing in a swimming spa, while actually you are taking care of your body and soul in the comfort of your home.



Why choose a swim spa instead of a classic swimming pool?

Lets starts with the obvious: the size of the designated area. Swimming pools take up a large space so if you have a smaller yard a swim spa might be a better choice. Another important aspect that a swim spa can easily stand against the seasonal changes. You are able to use it all year long, especially if installed indoors. You can only enjoy the benefits of a swimming pool during the warmer months.

The average maintenance costs of a swimming pool for these months are almost the double of the costs of a swim spa for a year. The safety cover can also make a huge difference in the costs. The swim spa comes standard with a hard cover, it protects your family and pets from unwanted accidents and you will not have additional costs.



Rio Grande W-Flow - video



W-FLOW SYSTEM

The W-Flow counter-current system moves 180m³ water per hour, with a flow width of 50-60 cm. 5 pre-programmed and 3 personalized swim programs provide a variety of exercises for everyone.

TURBINE SYSTEM

The new high-performance turbine can deliver up to 215 m³ of water/h - twice as much as a conventional countercurrent system - while consuming 75% less electricity. Due to its very low current consumption (8 A), it can be operated from a single phase.

SWIMMING STICK

It assists the swimmer in staying in the centerline of the swim spa during a workout, but more importantly, it can increase water resistance for the swimmer in the swim spa, requiring more effort during the workout.

SEMI-INGROUND SIDE PANEL

The swim spa models are also available with a semi-recessed design, which makes it possible to partially sink the tub into the ground without constructing a concrete base.

AQUATIC EXERCISE BANDS AND ROWING KIT

Training and rowing set for swim spas. The expander combined with paddles offers the experience of real rowing. The expander alone, can be used for a number of different fitness trainings.

AQUASOUL™ SOUND SYSTEM

No more trouble with CDs or Mp3 players, or connect external units via USB cables, since you can connect to the built-in receiver unit from your mobile phone via Bluetooth.

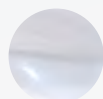
AQUABIKE

Aquabike is recommended for anyone in need of general fitness training, a rehabilitation workout, or who simply enjoy the fun of cycling itself.

SMARTPHONE APPLICATION

The in.touch 2 application makes it easier to control and program your spa via telephone or tablet, even when you are away from home. You can set the water temperature, circulation, check the current status of your spa.

AVAILABLE ACRYLIC & SIDE COVER COLORS AT SWIMLINE RANGE



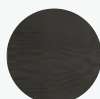
sterling
silver



brown



black



grey



semi-
inground



rio grande w-flow

The Rio Grande W-Flow swim spa is the result of a long development process. It is the perfect combination of a well-equipped spa and a swimming pool used as gym equipment suitable for a complete workout. The inner width of the swim area is almost 2 meters, its length is 314 cm.

Measurements (l × w × h)	6 000 × 2 350 × 1 470 mm
Reclining / sitting places	1 / 5
Net weight / Water volume	1 300 kg / 6 600 l
Frame	Stainless steel
Side cover	HorizontSide™ or semi-inground
Reinforcement	Fiberglass reinforced
Insulation	Polyfoam (2 cm)
Total number of jets	40
Min. power req.* (hydro massage)	1 × 34A / 230V / 50Hz
Min. power req.* (swim spa)	1 × 49A / 230V / 50Hz
Pumps (hydro massage)	2 × 3 HP, single speed + circ. pump
Pumps (swim spa)	3 × 3 HP, double speed + circ. pump
Heater	3 kW
Control box / panel	Gecko (IN.YE-3 + IN.YE-8) / 2 × SmartTouch
Auxiliary control panel	-
Water sanitization	2 × UV-C system
Cartridge filter	2 + 1 antibacterial filters
Laminar fountain jets	3 × 3
Waterfall	1
Led lights	2 × 16 exclusive LEDs + illuminated control valves
Sound system	AquaSoul™ Pro 4.1
Aromatic therapy	-
SmartPhone app - wifi connection	standard
Oxygen therapy	-
Heat exchanger preparation	standard
Swimming stick	standard
Thermo cover	standard

Options: Scandinavian insulation (3,5 cm)
Lighting jets
Paddle



rio grande turbine

The Rio Grande swim spa provides combined experience for its users. The inner design of the Rio Grande Turbine hydro massage swim spa parts is the same as the ergonomic design from the popular Malaga. Due to the 40 hydro massage jets, bathers can have the best possible massage experience.

Measurements (l × w × h)	6 000 × 2 350 × 1 470 mm
Reclining / sitting places	1 / 5
Net weight / Water volume	1 300 kg / 6 600 l
Frame	Stainless steel
Side cover	HorizontSide™ or semi-inground
Reinforcement	Fiberglass reinforced
Insulation	Polyfoam (2 cm)
Total number of jets	40
Min. power req.* (hydro massage)	1 × 32A / 230V / 50Hz
Min. power req.* (swim spa)	1 × 22A / 230V / 50Hz
Pumps (hydro massage)	2 × 3 HP, single speed + circ. pump
Pumps (swim spa)	Turbine + circ. pump
Heater	3 kW
Control box / panel	Gecko (2 × IN.YE-3) / 2 × SmartTouch
Auxiliary control panel	-
Water sanitization	2 × UV-C system
Cartridge filter	2 + 1 antibacterial filters
Laminar fountain jets	3 × 3
Waterfall	1
Led lights	2 × 16 exclusive LEDs + illuminated control valves
Sound system	AquaSoul™ Pro 4.1
Aromatic therapy	-
SmartPhone app - wifi connection	standard
Oxygen therapy	-
Heat exchanger preparation	standard
Swimming stick	standard
Thermo cover	standard

Options: Scandinavian insulation (3,5 cm)
Lighting jets
Paddle



amazonas w-flow

Amazonas for lovers of an unforgettable swimming experience! Choose our Amazonas W-Flow model for your home and use it as a perfect tool for a workout or for an afternoon of lounging with the kids! With the W-Flow system you can compile individual training programs!

Measurements (l × w × h)	5 500 × 2 350 × 1 500 mm
Swim area / Sitting places	1 / 2
Net weight / Water volume	1 150 kg / 8 000 l
Frame	Stainless steel
Side cover	HorizontSide™ or semi-inground
Reinforcement	Fiberglass reinforced
Insulation	Polyfoam (2 cm)
Total number of jets	27
Min. power requirement*	3 × 20A / 230V / 50Hz
Pumps (hydro massage)	1 × 3 HP, single speed + circ. pump
Pumps (swim spa)	3 × 3 HP, double speed
Heater	3 kW
Control box / panel	Gecko (IN.YE-8) / SmartTouch
Auxiliary control panel	-
Water sanitization	UV-C system
Cartridge filter	4 × antibacterial filters
Laminar fountain jets	2 × 3
Waterfall	-
Led lights	25 × exclusive LEDs + illuminated control valves
Sound system	AquaSoul™ Pro 4.1
Aromatic therapy	-
SmartPhone app - wifi connection	standard
Oxygen therapy	-
Heat exchanger preparation	standard
Swimming stick	standard
Thermo cover	standard

Options: Scandinavian insulation (3,5 cm)
Lighting jets
Paddle

amazonas turbine

Amazonas turbine has two sitting places, so you can use professional swimming and unique massage in parallel. A side-mounted filter housing is now placed at the end of the swimming area, so that the floating area is wider. With the Turbine system, you don't have to worry about maintenance costs in the long run!

Measurements (l × w × h)	5 500 × 2 350 × 1 500 mm
Swim area / Sitting places	1 / 2
Net weight / Water volume	1 150 kg / 8 000 l
Frame	Stainless steel
Side cover	HorizontSide™ or semi-inground
Reinforcement	Fiberglass reinforced
Insulation	Polyfoam (2 cm)
Total number of jets	27
Opt. power requirement	3 × 16A / 230V / 50Hz
Min. power requirement*	1 × 26A / 230V / 50Hz
Pumps (hydro massage)	1 × 3 HP, single speed + circ. pump
Pumps (swim spa)	Turbine
Heater	3 kW
Control box / panel	Gecko (IN.YE-3) / SmartTouch
Auxiliary control panel	-
Water sanitization	UV-C system
Cartridge filter	4 × antibacterial filters
Laminar fountain jets	2 × 3
Waterfall	-
Led lights	25 × exclusive LEDs + illuminated control valves
Sound system	AquaSoul™ Pro 4.1
Aromatic therapy	-
SmartPhone app - wifi connection	standard
Oxygen therapy	-
Heat exchanger preparation	-standard
Swimming stick	standard
Thermo cover	standard

Options: Scandinavian insulation (3,5 cm)
Lighting jets
Paddle



danube **w-flow**

Captivating solutions await you in our Danube model. With the W-Flow system, individual training solutions are combined with individual settings, thus guaranteeing the most favorable swimming program.

Measurements (l × w × h)	4 500 × 2 350 × 1 470 mm
Swim area / Sitting places	1 / 2
Net weight / Water volume	1 047 kg / 5 913 l
Frame	Stainless steel
Side cover	HorizontSide™ or semi-inground
Reinforcement	Fiberglass reinforced
Insulation	Polyfoam (2 cm)
Total number of jets	24
Min. power requirement*	3 × 20A / 230V / 50Hz
Pumps (hydromassage)	1 × 3 HP, single speed + circ. pump
Pumps (swim spa)	3 × 3 HP, double speed
Heater	3 kW
Control box / panel	Gecko (IN.YE-8) / SmartTouch
Auxiliary control panel	-
Water sanitization	UV-C system
Cartridge filter	2 × antibacterial filters
Laminar fountain jets	2 × 3
Waterfall	-
Led lights	18 × exclusive LEDs + illuminated control valves
Sound system	AquaSoul™ Pro 4.1
Aromatic therapy	-
SmartPhone app - wifi connection	standard
Oxygen therapy	-
Heat exchanger preparation	standard
Swimming stick	standard
Thermo cover	standard

Options: Scandinavian insulation (3,5 cm)
Lighting jets
Paddle



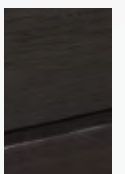
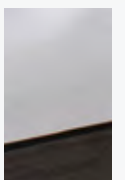
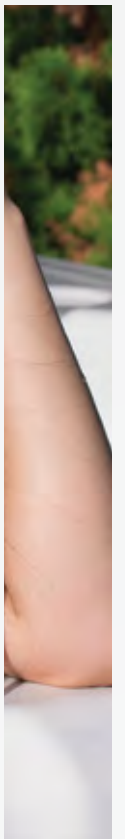
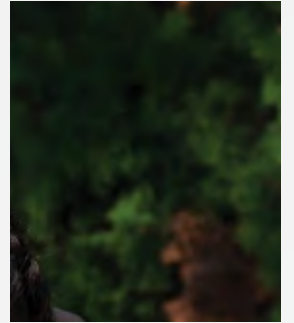
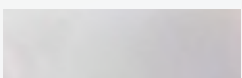
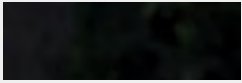
danube **turbine**

Thanks to its turbine countercurrent system, unmatched performance is coupled with low power consumption. Our Danube product has two seats, so you no longer have to choose between the perfect massage experience and an unforgettable swimming program.

Measurements (l × w × h)	4 500 × 2 350 × 1 470 mm
Swim area / Sitting places	1 / 2
Net weight / Water volume	1 047 kg / 5 913 l
Frame	Stainless steel
Side cover	HorizontSide™ or semi-inground
Reinforcement	Fiberglass reinforced
Insulation	Polyfoam (2 cm)
Total number of jets	24
Opt. power requirement	3 × 16A / 230V / 50Hz
Min. power requirement*	1 × 26A / 230V / 50Hz
Pumps (hydromassage)	1 × 3 HP, single speed + circ. pump
Pumps (swim spa)	Turbine
Heater	3 kW
Control box / panel	Gecko (IN.YE-3) / SmartTouch
Auxiliary control panel	-
Water sanitization	UV-C system
Cartridge filter	2 × antibacterial filters
Laminar fountain jets	2 × 3
Waterfall	-
Led lights	16 pcs LED + Central + StarLight™ illuminated corner element
Sound system	AquaSoul™ Pro 4.1
Aromatic therapy	-
SmartPhone app - wifi connection	standard
Oxygen therapy	-
Heat exchanger preparation	standard
Swimming stick	standard
Thermo cover	standard

Options: Scandinavian insulation (3,5 cm)
Lighting jets
Paddle

* If the minimum current is connected, the massage motor(s) and the heating unit cannot be operated at the same time.



The spa helps you relax, thus reducing stress.

PeakLine options	Elbrus 230	Kilimanjaro	Everest	Olympus
Scandinavian insulation	o	o	o	o
Illuminated jets (up to 50 jets)	×	×	×	×
Illuminated jets (from 51 jets)	o	o	✓	✓
Oxygen therapy	o	o	✓	×

CityLine options	Manhattan	Palermo	Palermo standard	Malaga	Malaga standard
Scandinavian insulation	o	o		o	
Illuminated jets (up to 50 jets)	o	×		×	

MyLine options	Mars	Pluto	Jupiter	Venus	Saturn	Kilimanjaro stand.
Scandinavian insulation	o	o	o	o	o	o
SmartPhone app - wifi connection	o	o	o	o	o	o

SwimLine options	Rio Grande w-flow	Rio Grande turbine	Amazonas w-flow	Amazonas turbine	Danube w-flow	Danube turbine
Semi-Side cover	o	o	o	o	o	o
Scandinavian insulation	o	o	o	o	o	o
Illuminated jets (up to 50 jets)	o	o	×	×	×	×

× do not included | o option | ✓ standard

A spa is the perfect place for carefree conversations.



Accessories



Spa grip

This stainless steel grip covered with anti-slip foam can be mounted on the side panel of any spa. It ensures a comfortable and safe way to get in and out of the spa.



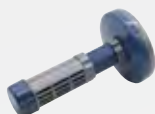
Spaziano tray

A convenient place for spa users to place snacks, drinks, cell phones, or eyeglasses. Stainless steel post that installs on any spa model.



Spa Umbrella

The spa umbrella, which can be fixed to any spa, ensures pleasant spa use even in hot sunshine. The umbrella can be opened and folded with using a manual handle bar. The height is adjustable with a button.



Floating chemical dispenser

It ensures a steady flow of chemicals. The chemical in the dispenser does not come into contact with the tub shell, therefore there is no damage or discoloration. Multi-stage, adjustable chemical dispensing.



Filter cleaning machine

The purpose of the Wellis filter cleaning system is to clean the your spa filter in a flash.



WelliStep

With its 83 cm wide anti-slip steps, this spa step is the best choice for your spa. Dimensions: 83 × 70 × 39 cm



Steel handrail

This handrail made of stainless steel can be fixed to the ground separately from the spa, providing safe support when getting in or out.

Accessories



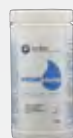
Swim spa stairs

Dimension with rail:
147 × 165 × 93.5 cm
Dimension without rail:
147 × 77 × 88 cm



Towel bar

A useful accessory for your spa, where you can store your towel or clothes safe from splashing water or from getting wrinkled.



Bromine salt

Water sanitizer granulate with sodium-bromide content for spas equipped with the in.Clear (bromine generating) system. 2.2 kg/box
Dosage: about 0,143 kg bromine salt per ~100 l water.



Wellis Crystal spa chemical package

Package content:
2 l Wellis Watertreatment; 18 × chlorine tablets; 1 dispenser (for chlorine tablets); 1 microfiber cloth.



Wellis Crystal swim spa chemical package

Package content:
26 × water soluble packs (100 g), 1 chlorine tablet holder, 30 × chlorine tablets 90%/20g, 1 microfiber cloth, instructions for use.



Wellis Crystal Pool check 5in1 test strip for water analysis

Test strips for measuring total water hardness, total chlorine, free chlorine, total alkalinity and pH. 50 pcs/box.



Spa Cleaner

Specially designed for the cleaning of spa water pipes. Removes lime scale deposits and impurities. It is used when the spa water is freshened or exchanged. As a manufacturer, we recommend spa water be changed quarterly.

Accessories



Active charcoal filter for spas

When your spa is filled through an active charcoal pre-filter, you get crystal clear bathwater. Sufficient for pre-filtering 8,000 l water.



Water softener for spas

If your spa is filled with demineralized water through the pre-filter with resin, it will prevent limestone build-up on mechanical devices, and therefore increase their service life. Sufficient for pre-filtering 8,000 l water.



Antibacterial filter cartridges

Paper filters with antibacterial coated, with their increased surface fibres, have several times the capacity of traditional filter cartridges.



Superfine paper filters

They filter mechanical impurities and prevent bacteria overgrowth in spa water.



Wellis Crystal filter cleaner

To keep the spa water crystal clear, the spa filter must be cleaned once a week using the Wellis Crystal filter cleaner. Depending on use, this process may be performed more frequently as well.



Aroma oil for spas

Fragrances: eucalyptus, lavender, mediterranean, orange bloom, rosemary.



Thermo cover

The purpose of using a thermo cover is to keep the spa heat at a pre-set level. A special foam ensures thermal insulation, covered with stylish UV-resistant artificial leather. The thermo cover is 120 mm thick in the middle, sloping (70 mm) towards the sides of the spa to ensure that snow and rain drain off easily.

Thermo cover colors

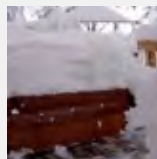


Dark grey



Light grey

Accessories



Xtreme™ winter spa cover

The Xtreme™ winter spa covers are in general 5 cm thicker than traditional thermo covers. It is recommended for users who wish to benefit from the positive effects of hot bathing even during cold winters.



Easy-Lifter cover lifter

With the use of the Easy-Lifter cover lifter, one person can easily remove the thermo cover. It fits all spa sizes. Durable, powder-spayed surface. Non-slip handle.



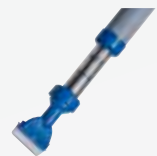
Universal cover lifter

Removing the cover is easier than ever with the universal cover lifter. In order to ensure proper operation, there must be a space of at least 60 cm between the side of the spa and the wall. Can be used with Xtreme™ Thermo cover as well!



Spa bag

The Wellis Spa bag provides protection against UV-rays, so you can enjoy your spa, in pristine condition, for a long time.



Spa wand

With the vacuum spa cleaner, the hand-held Spa wand, you may collect impurities from the bottom of the spa, the steps or the surface of water – without having to drain the water. It is delivered with special heads.



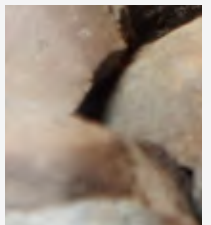
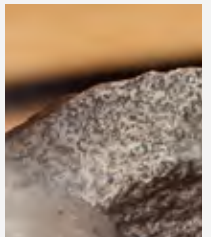
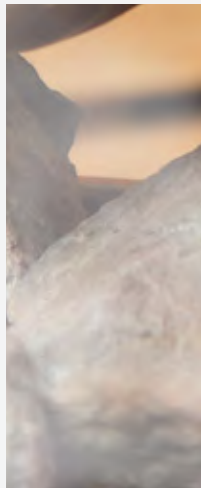
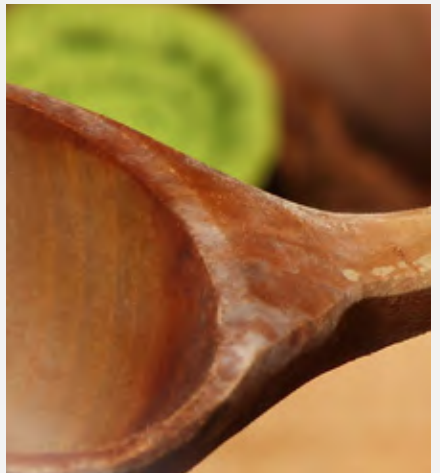
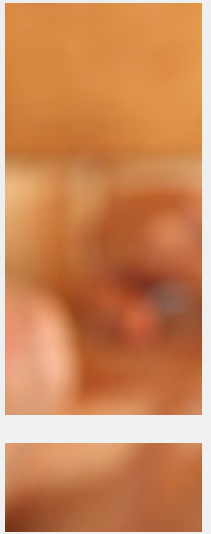
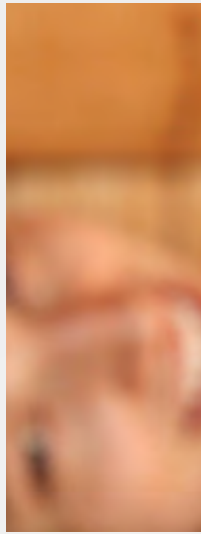
Manual filter cartridge cleaner

The filters can be cleaned simply and quickly with the manual filter cartridge cleaner. Eight lamellas can be cleaned at the same time without splashing; it can be connected to the garden hose.



Spa booster pillow

This comfortable pillow fits any spa; it can be fixed and adjusted to the water level. Sturdy, heat resistant material, easy to fill, standard pipe fitting, suction cup for non-slip feature.





helios infrared sauna, solaris infrared sauna, sundance infrared sauna, eclipse combined sauna, igneus finnish sauna, serenis finnish sauna, calidus finnish sauna

SAUNAS

RELAXATION, REFRESHNESS, RENEWAL

You have probably already heard about the positiv benefits of saunas. There are several different types of saunas, and not easy to find the one that meets your preferences. In this article, we will explain in detail the benefits of the saunas, the differences between the Finnish and the infrared saunas, as well as the main features of our Wellis saunas.





Infrared saunas

An infrared cabin is efficient, yet more gentle than traditional saunas, as the temperature inside is only 35–45 °C, thus it is suitable for people who don't prefer higher temperatures. The heart of the infrared cabin is an infrared heater that emits an invisible ray of certain defined wavelengths. Long-wave infrared radiation penetrates into muscle fibers at a depth of 3.5 to 4 cm, resulting in 3–4 times stronger sweating than normal.

Inside an infrared sauna, sweating happens not only through the sweat glands, but also through the sebaceous glands, which is important because many toxic substances are not soluble in water but only in body fat. In a normal sauna, 97% of the sweat consists of water, while in the case of an infra sauna, 80% of sweat is water and 20% of it is fat, and it contains cholesterol and other fat-soluble substances as well. So during the use of an infrared sauna, you not only lose weight but also get rid of harmful chemicals and toxins accumulated in your body.

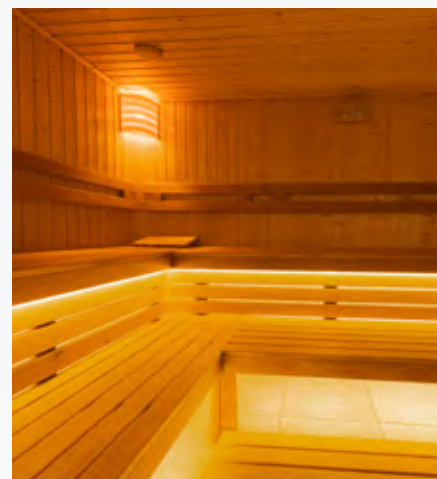
Special lamps use light waves to heat a person's body, not the entire room. Temperatures are typically lower than other saunas, but the person sweats in a similar way.

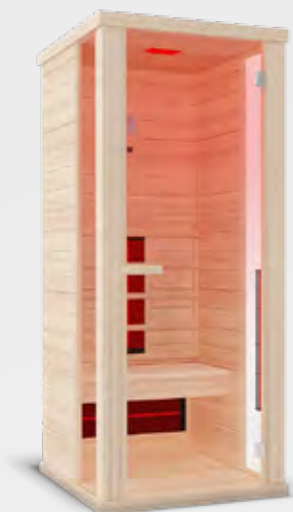
Beneficial effects of Finnish sauna

The high temperature of the sauna generates steam. Heat and steam induce increased sweating, which dilates the pores of the skin. Sweating removes toxins and other deposits from the body through the pores. In addition to refreshing, sauna users often experience an improvement in their health. It is no coincidence. Sweating detoxifies our bodies, relaxes our muscles, and significantly improves our overall well-being. Warm steam stimulates blood circulation in all cartilage in our body, including muscles and joints. As a result, the oxygen supply improves, which is vital for the regeneration and formation of cells.

Many people consider usage of saunas to be a more effective weight loss method than sports. In fact, the sauna has a positive effect on our metabolism - it speeds up and increases its efficiency, which in turn can lead to weight loss. 15–20 minutes in a sauna is worth of an hour of brisk walking or lighter training!

Using a sauna with constant frequency helps relieve tension. Those with sleep difficulties (e.g. insomnia) especially like it, because using the sauna may trigger a deep and relaxing sleep. It is also suitable for treating allergic problems. It is recommended to use up to twice a week. You have to wait for it to warm up to the right temperature before entering.





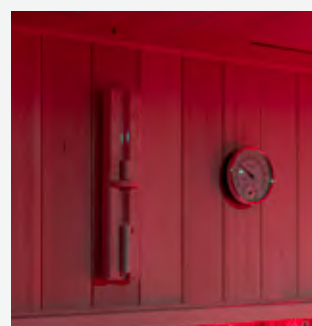
helios infrasauna

Measurements (l × w × h)	828 × 1 007 × 1 940 mm
Sitting places	1
Material	Canadian hemlock tree
Glass material	6-mm thick tinted safety glass
Led lights	standard
Bluetooth reciever	standard (for playing music)
Speakers	2
Ventilation holes	1
Heater	4 × energy saving RedLights (1 back: 350W, 2 front: 400W/pc, 1 calf level: 500W)
Energy requirement	1.65 kW



solaris infrasauna

Measurements (l × w × h)	1 314 × 993 × 1 940 mm
Sitting places	2
Material	Canadian hemlock tree
Glass material	6-mm thick tinted safety glass
Led lights	standard
Bluetooth reciever	standard (for playing music)
Speakers	2
Ventilation holes	1
Heater	5 × energy saving RedLights (2 back: 350W/pc, 2 front: 400W/pc, 1 calf level: 500W)
Energy requirement	2 kW





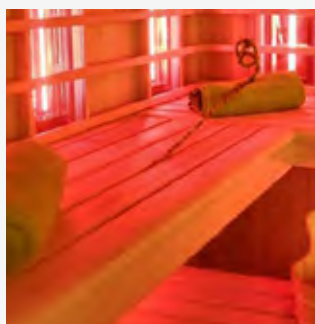
sundance infrasauna

Measurements (l × w × h)	1 594 × 993 × 1 940 mm
Sitting places	3
Material	Canadian hemlock tree
Glass material	6-mm thick tinted safety glass
Led lights	standard
Bluetooth reciever	standard (for playing music)
Speakers	2
Ventilation holes	1
Heater	6 × energy saving RedLights (3 back: 350W/pc, 2 front: 400W/pc, 1 calf level: 500W)
Energy requirement	2.35 kW



eclipse combined sauna

Measurements (l × w × h)	2 043 × 2 008 × 2 055 mm
Sitting places	5-6
Material	Canadian hemlock tree
Glass material	6-mm thick tinted safety glass
Led lights	standard
Bluetooth reciever	standard (for playing music)
Speakers	2
Ventilation holes	1
Heater - infrared sauna	8 × energy saving RedLights 2.8 kW/230 V (3 × 350W, 3 × 350W, 2 × 350W)
Heater - finnish sauna	8 kW/380 V
Heat and humidity meter	standard
Wooden pail with spoon	standard
Sandglass	standard
Lava rock	standard





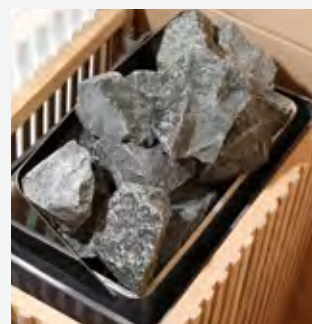
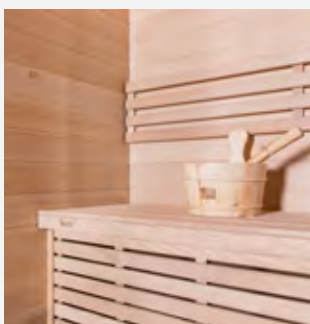
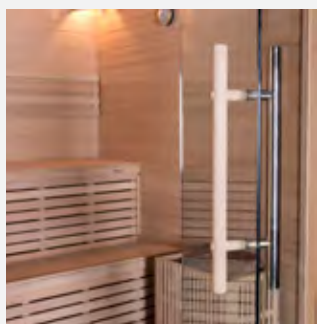
igneus finnish sauna

Measurements (l × w × h)	1 500 × 1 050 × 1 900 mm
Sitting places	2
Material	Canadian hemlock tree
Glass material	8-mm thick safety glass
Heat-resistant luminary & wood panel	standard
Fixed floor grid	standard
Removable stove protection grid	standard
Ventilation holes	1
Sawo furnace for Finnish sauna	4.5 kW/220 V
Heat and humidity meter	standard
Wooden pail with spoon	standard
Sandglass	standard
Lava rock	standard



serenis finnish sauna

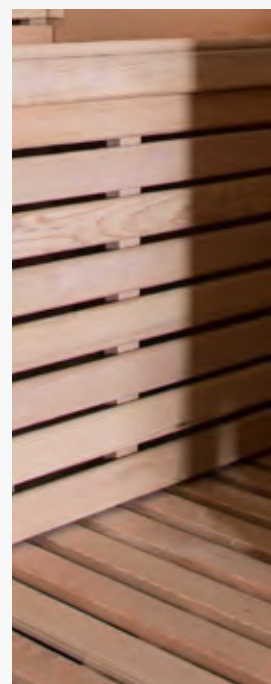
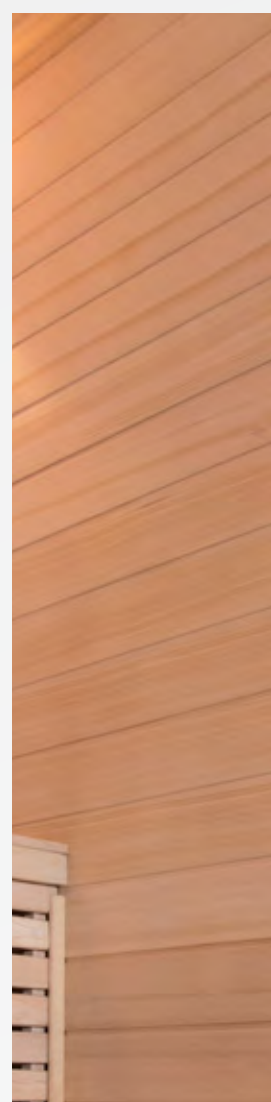
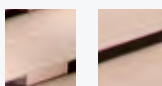
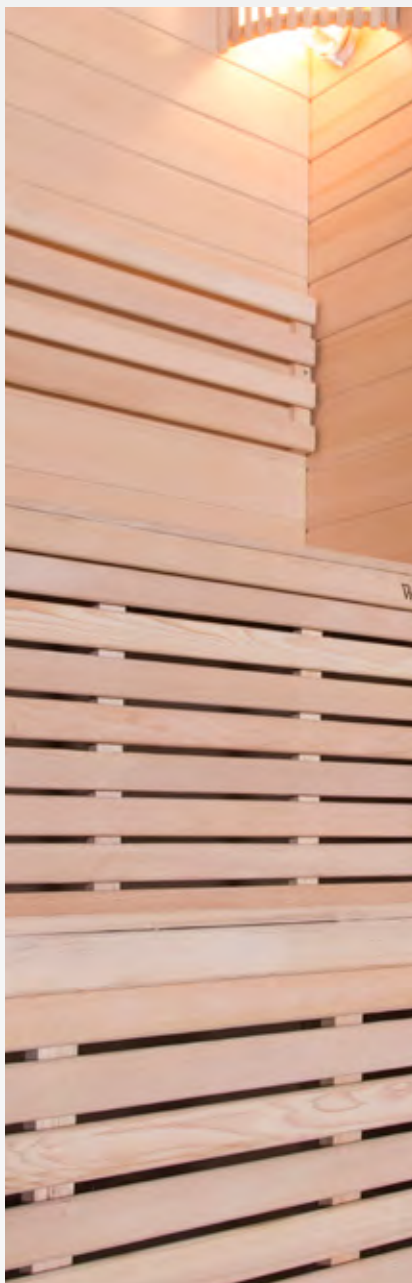
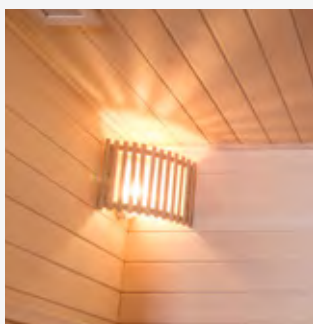
Measurements (l × w × h)	1 800 × 1 500 × 2 100 mm
Sitting places	4
Material	Canadian hemlock tree
Glass material	8-mm thick safety glass
Heat-resistant luminary & wood panel	standard
Fixed floor grid	standard
Removable stove protection grid	standard
Ventilation holes	1
Sawo furnace for Finnish sauna	8 kW/380 V
Heat and humidity meter	standard
Wooden pail with spoon	standard
Sandglass	standard
Lava rock	standard





calidus finnish sauna

Measurements (l × w × h)	2 000 × 1 700 × 2 100 mm
Sitting places	5-6
Material	Canadian hemlock tree
Glass material	8-mm thick safety glass
Heat-resistant luminary & wood panel	standard
Fixed floor grid	standard
Removable stove protection grid	standard
Ventilation holes	1
Sawo furnace for Finnish sauna	9 kW/380 V
Heat and humidity meter	standard
Wooden pail with spoon	standard
Sandglass	standard
Lava rock	standard





www.wellis.com
MARO